

Werkleitungen:

Bestand	Projekt
Schutzabzasser Gemeinde	
Schutzabzasser privat	
Schutzabzasser Druckleitung	
Regenwasser Gemeinde	
Regenwasser privat	
Wasser	
Steuerkabel	
Quelleitungen	
Elektrisch	
Beleuchtung/Kandelaber	
Swisscom	
Thurwerke	
Leitung verfüllen / abbrechen	

Kanton Appenzell Ausserrhoden
Gemeinde Schönggrund



Strassensanierung FLG Oberdorfstrasse Schönggrund

Bauprojekt
Entwässerung / Werkleitungsplan 1:200

Vom Gemeinderat genehmigt für die Planaufgabe nach Strassengesetz

am:
Der Gemeindevorstand: Die Gemeindevorsteherin:

AUFLAGEPLAN

Dieser Plan hat öffentlich aufzuliegen

vom: bis:
Die Gemeindevorsteherin:

Projektverfasser:

Walli AG Ingenieure

CH-9102 Hetschli, T. 061 303 90 38, info@walli.ch

Behördenstrasse 25, www.walli.ch

Freigabe:

Vom Gemeinderat erlassen am:

Die Gemeindevorsteherin:

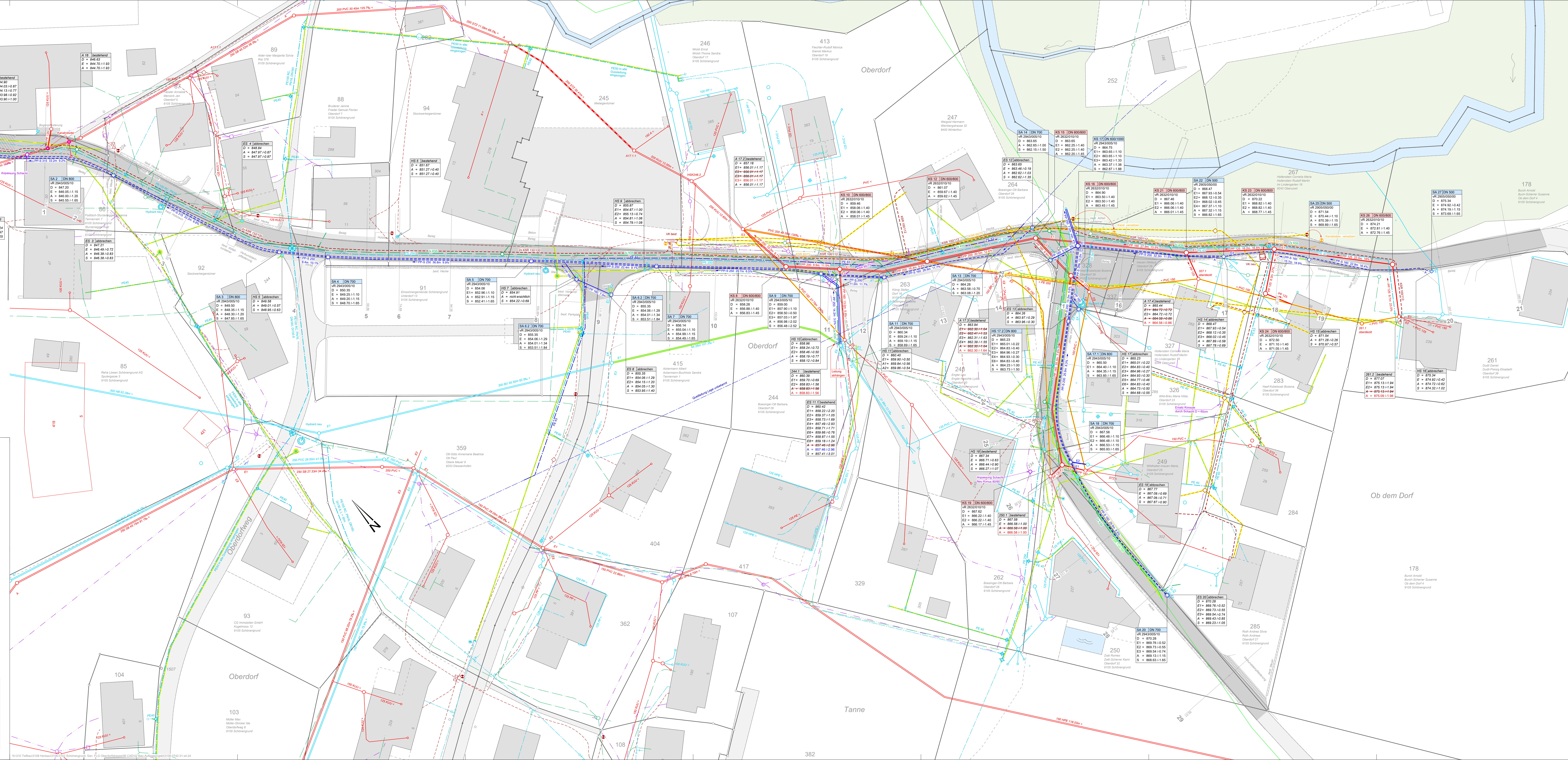
Plan Nr. 3108-0742-35

Format: 70 x 100 cm

And. Entw. Gez. Korrt. Datum

1. 2. 3. 4. 06.03.2028

Beispiel für:



79
Oliver-Gruel Dagen Mühle
Hörsingweg 12
9105 Schönggrund

SA 1.1 | DN 800
VR 294300010
D = 842.46
E1 = 843.07/-1.70
E2 = 841.20/-1.20
E3 = 841.67/-0.70
A = 840.66/-1.80

SA 1 | DN 800
VR 294300010
D = 844.31
E1 = 843.29/-1.03
E2 = 842.96/-1.15
E3 = 842.91/-1.20
A = 842.46/-1.85

ES 1 | abbrechen
D = 844.31
E1 = 844.03/-0.87
E2 = 844.33/-0.77
A = 843.90/-1.00

A 16 | bestehend
D = 846.63
E = 844.70/-1.93
A = 844.70/-1.93

ES 2 | bestehend
D = 844.69
E1 = 844.03/-0.87
E2 = 844.33/-0.77
A = 843.90/-1.00

ES 4 | abbrechen
D = 844.69
E1 = 844.03/-0.87
E2 = 844.33/-0.77
A = 843.90/-1.00

SA 2 | DN 800
VR 294300010
D = 842.20
E1 = 846.00/-1.15
E2 = 846.00/-1.20
S = 845.20/-1.65

SA 3 | DN 800
VR 294300010
D = 842.20
E1 = 846.00/-1.15
E2 = 846.00/-1.20
S = 845.20/-1.65

SA 4 | DN 700
VR 294300010
D = 850.35
E1 = 849.25/-1.10
E2 = 849.25/-1.15
S = 848.70/-1.85

SA 5 | DN 800
VR 294300010
D = 849.58
E1 = 849.01/-0.57
E2 = 849.58/-0.63
S = 847.80/-1.65

SA 6 | DN 700
VR 294300010
D = 854.06
E1 = 852.96/-1.10
E2 = 854.01/-1.34
S = 853.51/-1.84

SA 7 | DN 700
VR 294300010
D = 854.14
E1 = 854.04/-1.10
E2 = 854.01/-1.34
S = 853.51/-1.84

SA 8 | DN 700
VR 294300010
D = 854.99
E1 = 852.96/-1.10
E2 = 854.01/-1.34
S = 853.51/-1.84

SA 9 | DN 700
VR 294300010
D = 854.99
E1 = 852.96/-1.10
E2 = 854.01/-1.34
S = 853.51/-1.84

SA 10 | DN 700
VR 294300010
D = 854.99
E1 = 852.96/-1.10
E2 = 854.01/-1.34
S = 853.51/-1.84

SA 11 | DN 700
VR 294300010
D = 854.99
E1 = 852.96/-1.10
E2 = 854.01/-1.34
S = 853.51/-1.84

SA 12 | DN 700
VR 294300010
D = 854.99
E1 = 852.96/-1.10
E2 = 854.01/-1.34
S = 853.51/-1.84

SA 13 | DN 700
VR 294300010
D = 854.99
E1 = 852.96/-1.10
E2 = 854.01/-1.34
S = 853.51/-1.84

SA 14 | DN 700
VR 294300010
D = 854.99
E1 = 852.96/-1.10
E2 = 854.01/-1.34
S = 853.51/-1.84

SA 15 | DN 700
VR 294300010
D = 854.99
E1 = 852.96/-1.10
E2 = 854.01/-1.34
S = 853.51/-1.84

SA 16 | DN 700
VR 294300010
D = 854.99
E1 = 852.96/-1.10
E2 = 854.01/-1.34
S = 853.51/-1.84

SA 17 | DN 700
VR 294300010
D = 854.99
E1 = 852.96/-1.10
E2 = 854.01/-1.34
S = 853.51/-1.84

SA 18 | DN 700
VR 294300010
D = 854.99
E1 = 852.96/-1.10
E2 = 854.01/-1.34
S = 853.51/-1.84

SA 19 | DN 700
VR 294300010
D = 854.99
E1 = 852.96/-1.10
E2 = 854.01/-1.34
S = 853.51/-1.84

SA 20 | DN 700
VR 294300010
D = 854.99
E1 = 852.96/-1.10
E2 = 854.01/-1.34
S = 853.51/-1.84

SA 21 | DN 700
VR 294300010
D = 854.99
E1 = 852.96/-1.10
E2 = 854.01/-1.34
S = 853.51/-1.84

SA 22 | DN 700
VR 294300010
D = 854.99
E1 = 852.96/-1.10
E2 = 854.01/-1.34
S = 853.51/-1.84

SA 23 | DN 700
VR 294300010
D = 854.99
E1 = 852.96/-1.10
E2 = 854.01/-1.34
S = 853.51/-1.84

SA 24 | DN 700
VR 294300010
D = 854.99
E1 = 852.96/-1.10
E2 = 854.01/-1.34
S = 853.51/-1.84

SA 25 | DN 700
VR 294300010
D = 854.99
E1 = 852.96/-1.10
E2 = 854.01/-1.34
S = 853.51/-1.84

SA 26 | DN 700
VR 294300010
D = 854.99
E1 = 852.96/-1.10
E2 = 854.01/-1.34
S = 853.51/-1.84

SA 27 | DN 700
VR 294300010
D = 854.99
E1 = 852.96/-1.10
E2 = 854.01/-1.34
S = 853.51/-1.84

SA 28 | DN 700
VR 294300010
D = 854.99
E1 = 852.96/-1.10
E2 = 854.01/-1.34
S = 853.51/-1.84

SA 29 | DN 700
VR 294300010
D = 854.99
E1 = 852.96/-1.10
E2 = 854.01/-1.34
S = 853.51/-1.84

SA 30 | DN 700
VR 294300010
D = 854.99
E1 = 852.96/-1.10
E2 = 854.01/-1.34
S = 853.51/-1.84

SA 31 | DN 700
VR 294300010
D = 854.99
E1 = 852.96/-1.10
E2 = 854.01/-1.34
S = 853.51/-1.84

SA 32 | DN 700
VR 294300010
D = 854.99
E1 = 852.96/-1.10
E2 = 854.01/-1.34
S = 853.51/-1.84

SA 33 | DN 700
VR 294300010
D = 854.99
E1 = 852.96/-1.10
E2 = 854.01/-1.34
S = 853.51/-1.84

SA 34 | DN 700
VR 294300010
D = 854.99
E1 = 852.96/-1.10
E2 = 854.01/-1.34
S = 853.51/-1.84

SA 35 | DN 700
VR 294300010
D = 854.99
E1 = 852.96/-1.10
E2 = 854.01/-1.34
S = 853.51/-1.84

SA 36 | DN 700
VR 294300010
D = 854.99
E1 = 852.96/-1.10
E2 = 854.01/-1.34
S = 853.51/-1.84

SA 37 | DN 700
VR 294300010
D = 854.99
E1 = 852.96/-1.10
E2 = 854.01/-1.34
S = 853.51/-1.84

SA 38 | DN 700
VR 294300010
D = 854.99
E1 = 852.96/-1.10
E2 = 854.01/-1.34
S = 853.51/-1.84

SA 39 | DN 700
VR 294300010
D = 854.99
E1 = 852.96/-1.10
E2 = 854.01/-1.34
S = 853.51/-1.84

SA 40 | DN 700
VR 294300010
D = 854.99
E1 = 852.96/-1.10
E2 = 854.01/-1.34
S = 853.51/-1.84

SA 41 | DN 700
VR 294300010
D = 854.99
E1 = 852.96/-1.10
E2 = 854.01/-1.34
S = 853.51/-1.84

SA 42 | DN 700
VR 294300010
D = 854.99
E1 = 852.96/-1.10
E2 = 854.01/-1.34
S = 853.51/-1.84

SA 43 | DN 700
VR 294300010
D = 854.99
E1 = 852.96/-1.10
E2 = 854.01/-1.34
S = 853.51/-1.84

SA 44 | DN 700
VR 294300010
D = 854.99
E1 = 852.96/-1.10
E2 = 854.01/-1.34
S = 853.51/-1.84

SA 45 | DN 700
VR 294300010
D = 854.99
E1 = 852.96/-1.10
E2 = 854.01/-1.34
S = 853.51/-1.84

SA 46 | DN 700
VR 294300010
D = 854.99
E1 = 852.96/-1.10
E2 = 854.01/-1.34
S = 853.51/-1.84

SA 47 | DN 700
VR 294300010
D = 854.99
E1 = 852.96/-1.10
E2 = 854.01/-1.34
S = 853.51/-1.84

SA 48 | DN 700
VR 294300010
D = 854.99
E1 = 852.96/-1.10
E2 = 854.01/-1.34
S = 853.51/-1.84

SA 49 | DN 700
VR 294300010
D = 854.99
E1 = 852.96/-1.10
E2 = 854.01/-1.34
S = 853.51/-1.84

SA 50 | DN 700
VR 294300010
D = 854.99
E1 = 852.96/-1.10
E2 = 854.01/-1.34
S = 853.51/-1.84

SA 51 | DN 700
VR 294300010
D = 854.99
E1 = 852.96/-1.10
E2 = 854.01/-1.34
S = 853.51/-1.84

SA 52 | DN 700
VR 294300010
D = 854.99
E1 = 852.96/-1.10
E2 = 854.01/-1.34
S = 853.51/-1.84

SA 53 | DN 700
VR 294300010
D = 854.99
E1 = 852.96/-1.10
E2 = 854.01/-1.34
S = 853.51/-1.84

SA 54 | DN 700
VR 294300010
D = 854.99
E1 = 852.96/-1.10
E2 = 854.01/-1.34
S = 853.51/-1.84

SA 55 | DN 700
VR 294300010
D = 854.99
E1 = 852.96/-1.10
E2 = 854.01/-1.34
S = 853.51/-1.84

SA 56 | DN 700
VR 294300010
D = 854.99
E1 = 852.96/-1.10
E2 = 854.01/-1.34
S = 853.51/-1.84

SA 57 | DN 700
VR 294300010
D = 854.99
E1 = 852.96/-1.10
E2 = 854.01/-1.34
S = 853.51/-1.84

SA 58 | DN 700
VR 294300010
D = 854.99
E1 = 852.96/-1.10
E2 = 854.01/-1.34
S = 853.51/-1.84

SA 59 | DN 700
VR 294300010
D = 854.99
E1 = 852.96/-1.10
E2 = 854.01/-1.34
S = 853.51/-1.84

SA 60 | DN 700
VR 294300010
D = 854.99
E1 = 852.96/-1.10
E2 = 854.01/-1.34
S = 853.51/-1.84

SA 61 | DN 700
VR 294300010
D = 854.99
E1 = 852.96/-1.10
E2 = 854.01/-1.34
S = 853.51/-1.84

SA 62 | DN 700
VR 294300010
D = 854.99
E1 = 852.96/-1.10
E2 = 854.01/-1.34
S = 853.51/-1.84

SA 63 | DN 700
VR 294300010
D = 854.99
E1 = 852.96/-1.10
E2 = 854.01/-1.34
S = 853.51/-1.84

SA 64 | DN 700
VR 294300010
D = 854.99
E1 = 852.96/-1.10
E2 = 854.01/-1.34
S = 853.51/-1.84

SA 65 | DN 700
VR 294300010
D = 854.99
E1 = 852.96/-1.10
E2 = 854.01/-1.34
S = 853.51/-1.84

SA 66 | DN 700
VR 294300010
D = 854.99
E1 = 852.96/-1.10
E2 = 854.01/-1.34
S = 853.51/-1.84

SA 67 | DN 700
VR 294300010
D = 854.99
E1 = 852.96/-1.10
E2 = 854.01/-1.34
S = 853.51/-1.84

SA 68 | DN 700
VR 294300010
D = 854.99
E1 = 852.96/-1.10
E2 = 854.01/-1.34
S = 853.51/-1.84

SA 69 | DN 700
VR 294300010
D = 854.99
E1 = 852.96/-1.10
E2 = 854.01/-1.34
S = 853.51/-1.84

SA 70 | DN 700
VR 294300010
D = 854.99
E1 = 852.96/-1.10
E2 = 854.01/-1.34
S = 853.51/-1.84

SA 71 | DN 700
VR 294300010
D = 854.99
E1 = 852.96/-1.10
E2 = 854.01/-1.34
S = 853.51/-1.84

SA 72 | DN 700
VR 294300010
D = 854.99
E1 = 852.96/-1.10
E2 = 854.01/-1.34
S = 853.51/-1.84

SA 73 | DN 700
VR 294300010
D = 854.99
E1 = 852.96/-1.10
E2 = 854.01/-1.34
S = 853.51/-1.84

SA 74 | DN 700
VR 294300010
D = 854.99
E1 = 852.96/-1.10
E2 = 854.01/-1.34
S = 853.51/-1.84

SA 75 | DN 700
VR 294300010
D = 854.99
E1 = 852.96/-1.10
E2 = 854.01/-1.34
S = 853.51/-1.84

SA 76 | DN 700
VR 294300010
D = 854.99
E1 = 852.96/-1.10
E2 = 854.01/-1.34
S = 853.51/-1.84

SA 77 | DN 700
VR 294300010
D = 854.99
E1 = 852.96/-1.10
E2 = 854.01/-1.34
S = 853.51/-1.84

SA 78 | DN 700
VR 294300010
D = 854.99
E1 = 852.96/-1.10
E2 = 854.01/-1.34
S = 853.51/-1.84

SA 79 | DN 700
VR 294300010
D = 854.99
E1 = 852.96/-1.10
E2 = 854.01/-1.34
S = 853.51/-1.84

SA 80 | DN 700
VR 294300010
D = 854.99
E1 = 852.96/-1.10
E2 = 854.01/-1.34
S = 853.51/-1.84

SA 81 | DN 700
VR 294300010
D = 854.99
E1 = 852.96/-1.10
E2 = 854.01/-1.34
S = 853.51/-1.84

SA 82 | DN 700
VR 294300010
D = 854.99
E1 = 852.96/-1.10
E2 = 854.01/-1.34
S = 853.51/-1.84

SA 83 | DN 700
VR 294300010
D = 854.99
E1 = 852.96/-1.10
E2 = 854.01/-1.34
S = 853.51/-1.84

SA 84 | DN 700
VR 294300010
D = 854.99
E1 = 852.96/-1.10
E2 = 854.01/-1.34
S = 853.51/-1.84

SA 85 | DN 700
VR 294300010
D = 854.99
E1 = 852.96/-1.10
E2 = 854.01/-1.34
S = 853.51/-1.84

SA 86 | DN 700
VR 294300010
D = 854.99
E1 = 852.96/-1.10
E2 = 854.01/-1.34
S = 853.51/-1.84

SA 87 | DN 700
VR 294300010
D = 854.99
E1 = 852.96/-1.10
E2 = 854.01/-1.34
S = 853.51/-1.84